

## Jubilee Quilt 1

Designed and made by Sally Ablett

Quilt size 62" x 62" - finished block size 18" x 18"

## Requirements

Fabrics from the Jubilee collection

1. A344.1 - Royal Britannia on cream - 1½yd - 1½mtr
2. A610.2 - Jubilee on light blue - 1yd - 1mtr
3. A612.3 - Union jacks on dark blue - ¾yd - 40cm
4. A611.2 - Metallic silver crown on red - ⅝yd - 70cm
5. A345.4 - Union jack hearts on royal blue - 1yd - 1mtr
6. BB184 - Post box red - ¾yd - ¾mtr

Wadding and backing 66" x 66"

All measurements include ¼" seam allowances; press each seam as you go.

## Cutting

### From fabric 1 cut

9 x 7¼" x 7¼" cut in half diagonally twice

36 x 3½" x 6½"

36 x 3½" x 3½"

### From fabric 2 cut

18 x 7¼" x 7¼" cut in half diagonally twice

### From fabric 3 cut

9 x 5½" x 5½" cut in half diagonally twice

36 x 2⅝" x 2⅝"

### From fabric 4 cut

9 x 4¾" x 4¾"

18 x 4¼" x 4¼" cut in half diagonally twice

### From fabric 5 cut

24 x 2½" x 18½" - sashing

### From fabric 6 cut

36 x 3½" x 3½"

16 x 2½" x 2½"

## Making up the blocks



**Block 1**



**Centre of block - diagram 1**

All the blocks are made up in the same way.

Lay out your fabric pieces for the centre of the block as in diagram 1. Stitch the two small triangles to each side of the large triangle. Do this to all four triangles.

Now lay out your stitch pieces. Sewing in rows and then stitch the rows together to complete the centre part of the block.



**Diagram 2**



**Diagram 3**

Next part of the block. Lay out your fabric pieces for each corner. Sewing the two small squares together and then sew them to your strips  $3\frac{1}{2}$ " x  $6\frac{1}{2}$ " as in the block diagram 2 for each corner. Stitch a triangle to each side of the squares on two of them and then sew them to the centre part of the block as in the diagram 3.

Do the same to the other two corners but this time add another triangle to each side. Now sew them to each side of the block.

You need 9 blocks in total.

### **Completing the quilt**

Place all the blocks, sashing and squares out as in the main diagram.



Starting with a square and then sashing for the first row. The next row will be a square and block row. Repeat down the rows as in the main diagram to complete the quilt.

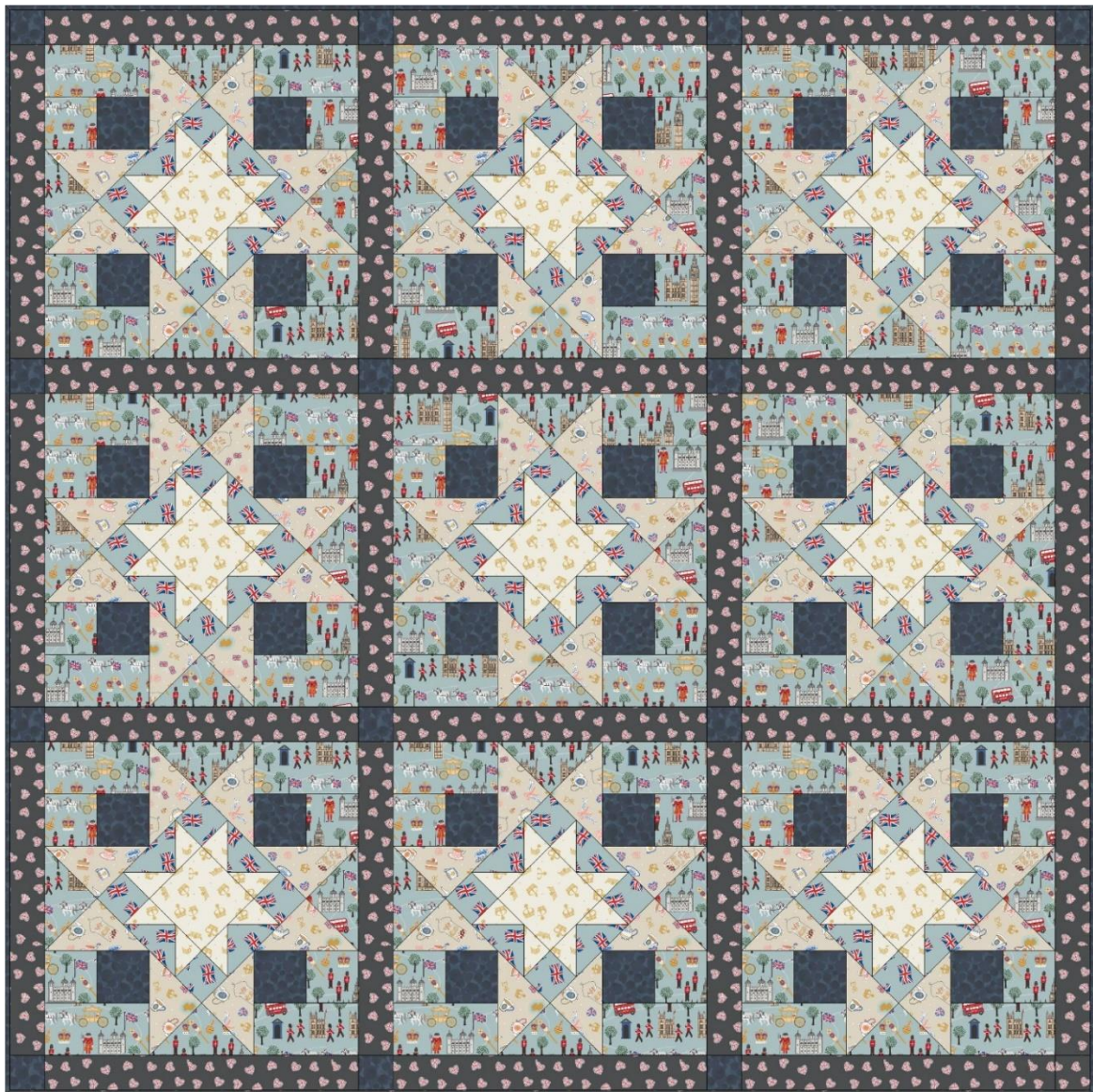
### **Quilting**

Sandwich quilt top, wadding and backing together. Quilt by hand or machine as desired. Trim backing and wadding to size of quilt.

### **Binding**

Use your favourite method from fabric 6 to bind the quilt.

Sally Ablett 2022 ©



## Jubilee Quilt 2

Designed and made by Sally Ablett

Quilt size 62" x 62" - finished block size 18" x 18"

## Requirements

Fabrics from the Jubilee collection

1. A344.2 - Royal Britannia on blue - 1½yd - 1½mtr
2. A610.1 - Jubilee on dark cream - 1yd - 1mtr
3. A612.2 - Union jacks on light blue - ¾yd - 40cm
4. A611.1 - Metallic gold crown on cream - ⅝yd - 70cm
5. A345.3 - Union jack hearts on black - 1yd - 1mtr
6. BB111 - Indigo - ¾yd - ¾mtr

Wadding and backing 66" x 66"

All measurements include ¼" seam allowances; press each seam as you go.

## Cutting

### From fabric 1 cut

9 x 7¼" x 7¼" cut in half diagonally twice

36 x 3½" x 6½"

36 x 3½" x 3½"

### From fabric 2 cut

18 x 7¼" x 7¼" cut in half diagonally twice

### From fabric 3 cut

9 x 5½" x 5½" cut in half diagonally twice

36 x 2⅝" x 2⅝"

### From fabric 4 cut

9 x 4¾" x 4¾"

18 x 4¼" x 4¼" cut in half diagonally twice

### From fabric 5 cut

24 x 2½" x 18½" - sashing

### From fabric 6 cut

36 x 3½" x 3½"

16 x 2½" x 2½"

## Making up the blocks



**Block 1**

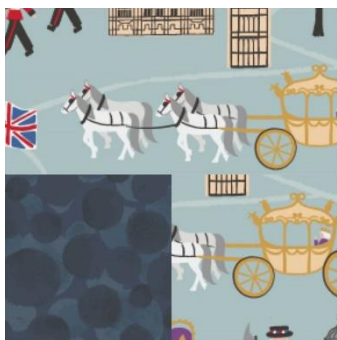


**Centre of block - diagram 1**

All the blocks are made up in the same way.

Lay out your fabric pieces for the centre of the block as in diagram 1. Stitch the two small triangles to each side of the large triangle. Do this to all four triangles.

Now lay out your stitch pieces. Sewing in rows and then stitch the rows together to complete the centre part of the block.



**Diagram 2**



**Diagram 3**

Next part of the block. Lay out your fabric pieces for each corner. Sewing the two small squares together and then sew them to your strips  $3\frac{1}{2}$ " x  $6\frac{1}{2}$ " as in the block diagram 2 for each corner. Stitch a triangle to each side of the squares on two of them and then sew them to the centre part of the block as in the diagram 3.

Do the same to the other two corners but this time add another triangle to each side. Now sew them to each side of the block.

You need 9 blocks in total.

### **Completing the quilt**

Place all the blocks, sashing and squares out as in the main diagram.



Starting with a square and then sashing for the first row. The next row will be a square and block row. Repeat down the rows as in the main diagram to complete the quilt.

### **Quilting**

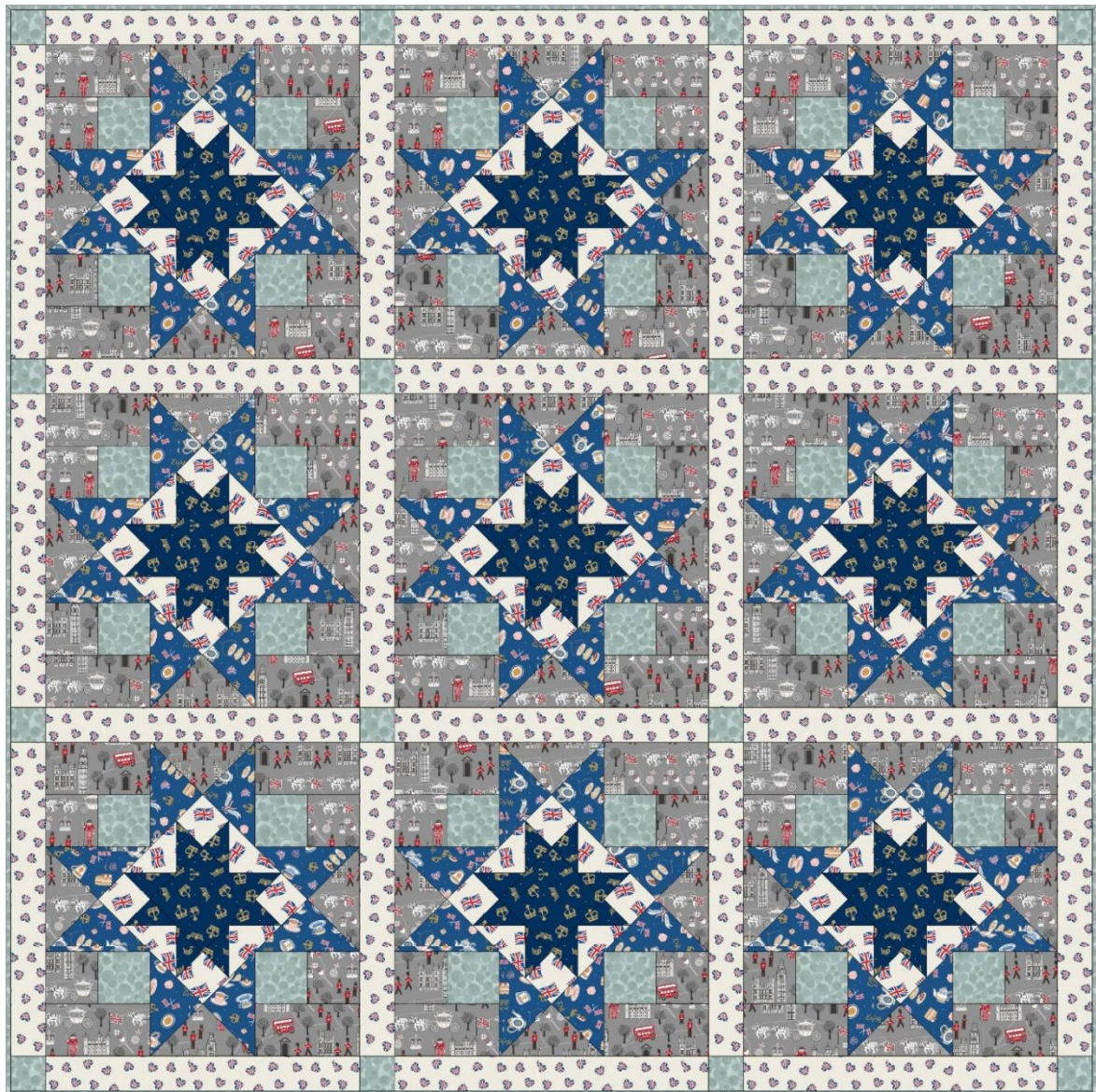
Sandwich quilt top, wadding and backing together. Quilt by hand or machine as desired. Trim backing and wadding to size of quilt.

### **Binding**

Use your favourite method from fabric 6 to bind the quilt.

Sally Ablett 2022 ©





### Quilt 3 Jubilee

Designed and made by Sally Ablett

Quilt size 62" x 62" - finished block size 18" x 18"

## Requirements

Fabrics from the Jubilee collection

1. A344.3 - Royal Britannia on grey - 1½yd - 1½mtr
2. A610.3 - Jubilee on royal blue - 1yd - 1mtr
3. A612.1 - Union jacks on cream - ¾yd - 40cm
4. A611.3 - Metallic gold crown on dark blue - ⅝yd - 70cm
5. A345.1 - Union jack hearts on cream - 1yd - 1mtr
6. BB286 - Eggshell blue - ¾yd - ¾mtr

Wadding and backing 66" x 66"

All measurements include ¼" seam allowances; press each seam as you go.

## Cutting

### From fabric 1 cut

9 x 7¼" x 7¼" cut in half diagonally twice

36 x 3½" x 6½"

36 x 3½" x 3½"

### From fabric 2 cut

18 x 7¼" x 7¼" cut in half diagonally twice

### From fabric 3 cut

9 x 5½" x 5½" cut in half diagonally twice

36 x 2⅝" x 2⅝"

### From fabric 4 cut

9 x 4¾" x 4¾"

18 x 4¼" x 4¼" cut in half diagonally twice

### From fabric 5 cut

24 x 2½" x 18½" - sashing

### From fabric 6 cut

36 x 3½" x 3½"

16 x 2½" x 2½"

## Making up the blocks



**Block 1**



**Centre of block - diagram 1**

All the blocks are made up in the same way.

Lay out your fabric pieces for the centre of the block as in diagram 1. Stitch the two small triangles to each side of the large triangle. Do this to all four triangles.

Now lay out your stitch pieces. Sewing in rows and then stitch the rows together to complete the centre part of the block.



**Diagram 2**



**Diagram 3**

Next part of the block. Lay out your fabric pieces for each corner. Sewing the two small squares together and then sew them to your strips  $3\frac{1}{2}'' \times 6\frac{1}{2}''$  as in the block diagram 2 for each corner. Stitch a triangle to each side of the squares on two of them and then sew them to the centre part of the block as in the diagram 3.

Do the same to the other two corners but this time add another triangle to each side. Now sew them to each side of the block.

You need 9 blocks in total.

### **Completing the quilt**

Place all the blocks, sashing and squares out as in the main diagram.



Starting with a square and then sashing for the first row. The next row will be a square and block row. Repeat down the rows as in the main diagram to complete the quilt.

### **Quilting**

Sandwich quilt top, wadding and backing together. Quilt by hand or machine as desired. Trim backing and wadding to size of quilt.

### **Binding**

Use your favourite method from fabric 6 to bind the quilt.

Sally Ablett 2022 ©